

# DETAILED INSTALLATION, TRANSPORT, STORAGE AND USE MANUAL OF FAÇADE MEMBRANES COROTOP®

+  
+ **corotop.com.pl** +  
+  
+ +

# DESCRIPTION OF THE PRODUCTS

Façade membranes (wind barriers) are used to protect structures and thermal insulation of walls against humidity, water, snow and draughts inside the building, as well as drive-off moisture from inside the building to the outside.

The façade membranes should be selected and used according to a technical project developed in accordance with the construction regulations, their intended purpose and functionality, taking into account the general guidelines included in this manual.

If you are interested in our products, visit our website [www.corotop.com.pl](http://www.corotop.com.pl) to correctly select a façade membrane for your building.

## TRANSPORT AND STORAGE

- The façade membranes should be transported using covered means of transport in packages of the producer, on pallets or in containers.
- All wind barriers should be stored in closed, dry and well-ventilated rooms of non-aggressive atmosphere, in positive temperature and air humidity not exceeding 60%.
- The wind barriers should preferably be stored in the vertical position, on a levelled, hardened, smooth and clean surface.
- They must not be stored in passages and within a distance less than 1m from active heating devices.
- The façade membranes should remain in their original packaging until installation.

# PREPARATION FOR INSTALLATION

- The manufacturer will not be held responsible for defects of the façade membranes caused during transport not carried out by the manufacturer, as well as storage of the products in improper conditions.
- Wooden elements of the roof truss should be impregnated using solvent-free agents.
- Before installation, check all rolls of the wind barrier for previous damage.

## NOTICE

In case of noticing damage on the membrane or other visible abnormality, do not use it and discuss removal of the irregularity with the vendor.

Installation of the façade membranes will be equivalent to acceptance of their visual quality and lack of damage caused during transport or storage.

# FAÇADE MEMBRANE INSTALLATION TECHNICAL REQUIREMENTS

The manufacturer will not be responsible for installation defects or defects of the façade membranes caused by incorrect installation.

A correctly installed wind barrier must be arranged tightly in a way to prevent draughts and penetration of water and snow into the structure.

Therefore, pay special attention to ensure tight installation of the façade membranes in critical places, such as overlaps of membrane strips, window and door openings, as well as smaller elements that penetrate the wind barrier.

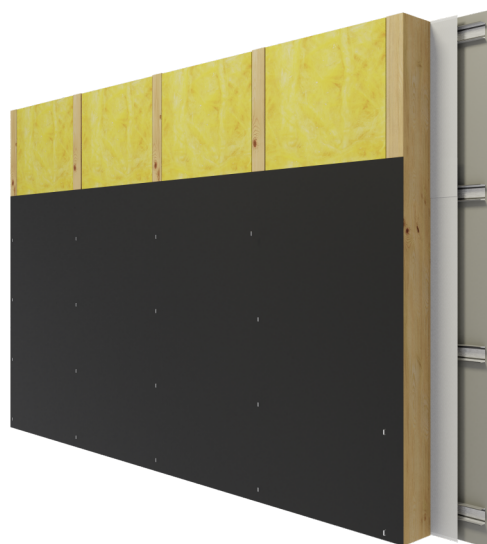
The installation must be carried out in accordance with the technical design of the building and the rules of art, as well as officially accepted by an authorised person, e.g. the construction manager.

## FAÇADE MEMBRANE INSTALLATION GENERAL REQUIREMENTS

- 1. The façade membrane (wind barrier) may be installed horizontally (from the bottom to the top), with inscriptions pointing to the outside.

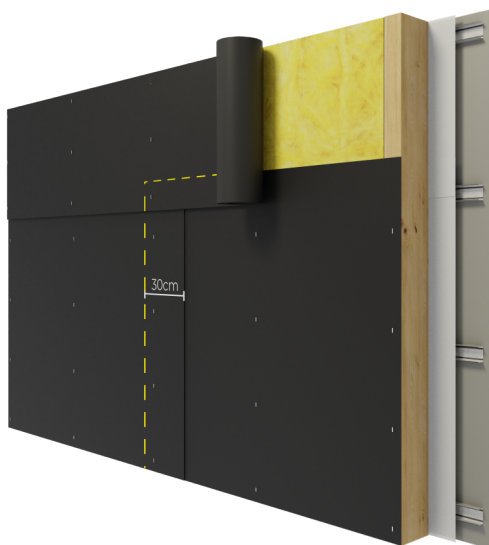


- 2. Slightly tighten the membrane and fix it to the structure using staples and nails with wide heads (tacks).

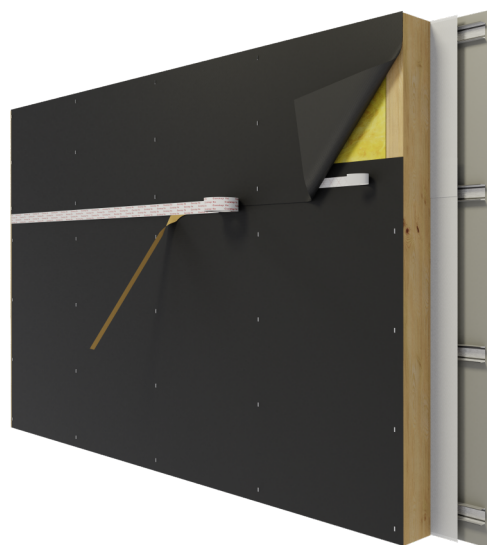


# FAÇADE MEMBRANE INSTALLATION GENERAL REQUIREMENTS

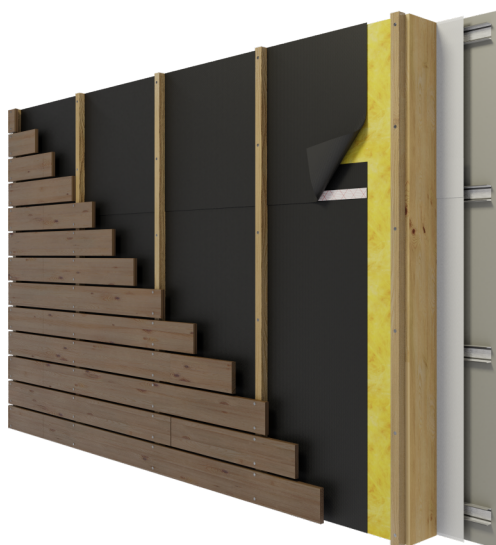
**3.** Further strips of the wind barrier should be installed with an appropriate overlap, which is printed on the membranes. A vertical overlap must be at least 30cm.



**4.** In order to eliminate draughts in the wall, it is required to bond the wind barrier on an overlap using a double- (e.g. Corotop MIX) or one-sided tape (e.g. Corotop FIX) or adhesive strips integrated with the membrane (PLUS version).



**5.** Provide a ventilation space of minimum width 2cm between the wind barrier and the façade.



# FINISHING WORKS

- All damaged places of the wind barrier must be carefully repaired and protected against penetration of water and draught to the structure, thermal insulation and interior of the building.
- The maximum UV exposure time is indicated on the product label\*  
It is recommended that the facade is installed immediately after windbarrier has been installed.

# EXPLOITATION

Each Corotop façade membrane will fulfil its function provided that it is installed in an uninterrupted and tight manner, preventing penetration of water and air draughts.

\*refers to the annual average insolation; as the periodic insolation increases, the duration of maximum exposure to UV radiation decreases proportionally